

# DATA SHEET

# TMI-Orion

## Qlever

## Software

Ceramics

Tiles

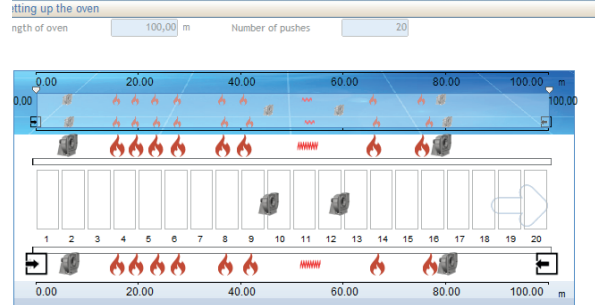
Bricks

**Specialized reports for the ceramic, tile, and brick industries.**

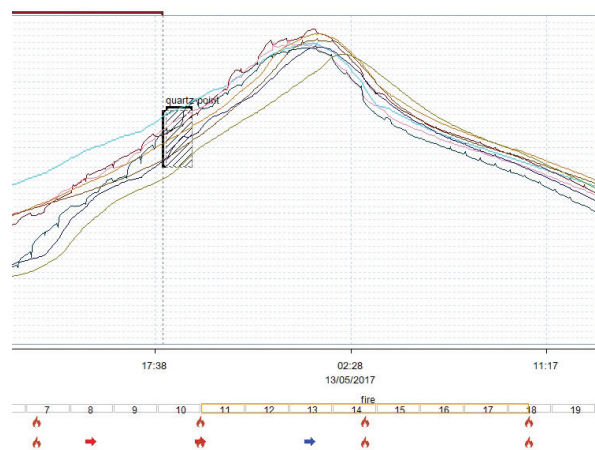
### Qlever software

Qlever is a secure software solution used with TMI-Orion data loggers (wired, radio and FullRadio) to:

- Set up, start and read the data loggers,
- Receive the real time data during the thermal process,
- Collect and read the measured data,
- Calculate and edit specific measurement reports.



Elements	zones
burner	Element
Input	Input
electrical resistance	Distance
probe	Position
Output	Difference
Fan	Add



### Ceramics module

- Creation of kiln configuration library with thermocouple and firing elements positioning,
- Kiln temperature profile with corresponding data logger position inside the kiln,
- Temperature report including kiln profile, load mapping and data analysis,
- Load 3D mapping with thermocouple positioning,
- Pushes and incidents management.





# QLEVER SOFTWARE - CERAMICS MODULE

Qlever is the general platform of our software offering. It operates alone or in combination with one or several industry specific software modules.

## CERAMICS MODULE

For thermal profile mapping in various points of a cart load during the entire industrial curing cycle.

### • Kiln description

Kiln length and number, length and duration of pushes.

### • Load description

Type and quantity of products, load set up, thermocouple management.

Positioning and 3D visualization of thermocouple probes location.

### • Kiln configuration

Position of burners, probes, fans, etc. inside the kiln and relative scheme with distances.

### • Pushes and events management

Cart thermocouple probes temperature visualization according to cart position in the kiln, pushes and incidents management.

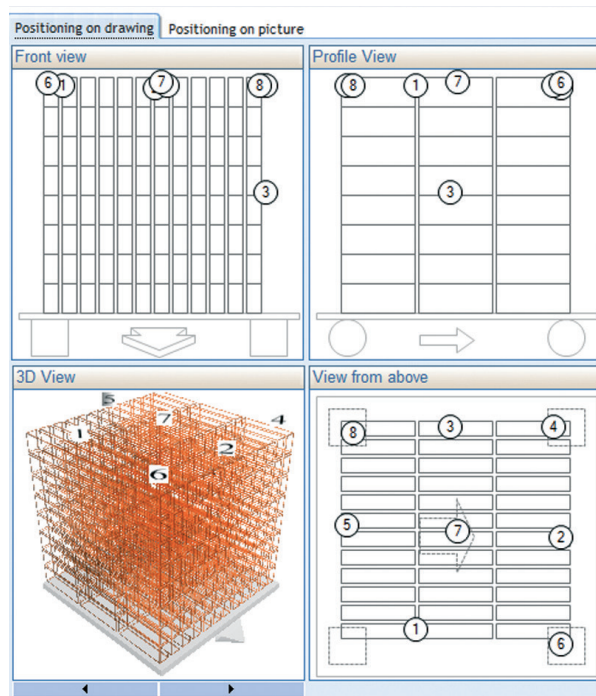
### • Temperature mapping

Display of the hot and cold spot in the load throughout all the processes in the kiln.

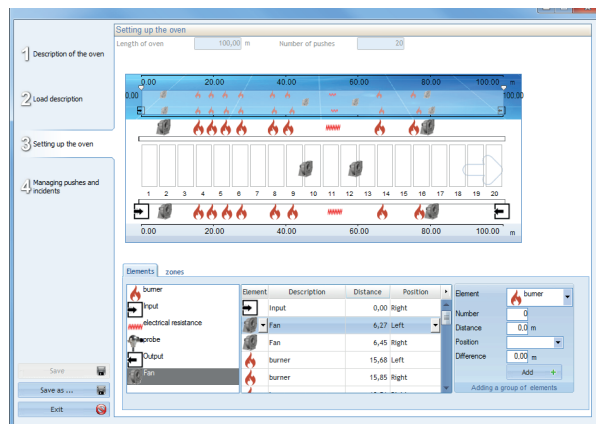
A color scale displays an easy-to-read thermal distribution.

### • Report

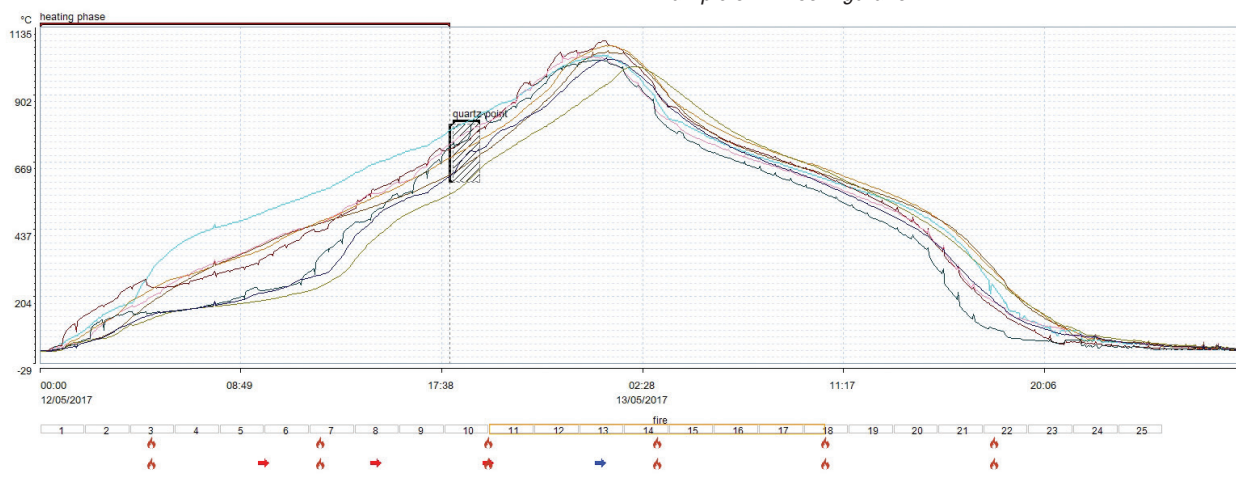
Data presentation in an extensive measurement report.



Example of load description



Example of kiln configuration



Example of curing thermal profile

## KEY POINTS - CERAMICS MODULE

- Creation of kiln configuration library with thermocouple and firing elements positioning,
- Kiln temperature profile with corresponding data logger position inside the kiln,
- Temperature report including kiln profile, load mapping and data analysis,
- Load 3D mapping with thermocouple positioning,
- Pushes and incidents management.

## FUNCTIONS

### Data collection and treatment

- Collection and logging of measured data,
- Up to 30 encrypted databases, locally or on the server,
- Collection and real time visualization of data with radio or FullRadio data loggers,
- Calculations: time at temperature, slopes calculations at any point (Quartz inversion slopes),
- Creation of calculation libraries, automatic calculations upon reading data,
- Possibility of raw data export to a spreadsheet.

### Data analysis and viewing

- Data and statistics analysis: minimum, maximum, average, max range, time above, time under, ramp time, slope calculation, etc.,
- Measurement report editing.

## TECHNICAL SPECIFICATIONS

- Multilingual environment,
- Data files in TMI-Orion proprietary format,
- The database is encrypted and cannot be modified,
- Database administration services (user account and access management, restore and save, reindex...),
- Single station or multiple stations database use (user data sharing),
- Keyword search engine,
- Secured data file import or export,
- Multiple station Qlever licence,
- Compliant with Windows® 7/8/10/11,
- Minimum requirement for software installation:
  - RAM: 8 GB
  - Disk space: 200 MB (Not including data measured by the loggers).

**Headquarters: TMI-Orion S.A.**  
Parc de Bellegarde - Bât. A  
1, chemin de Borie  
34170 Castelnau-le-Lez - France  
T.: +33 (0)4 99 52 67 10 – F.: +33 (0)4 99 52 67 19

**TMI** TMI-ORION  
[www.tmi-orion.com](http://www.tmi-orion.com)

**USA : TMI-USA, Inc.**  
11491 Sunset Hills Road, Suite 310  
Reston, VA 20190 - USA  
T : +1 703 668 0114 – F : +1 703 668 0118